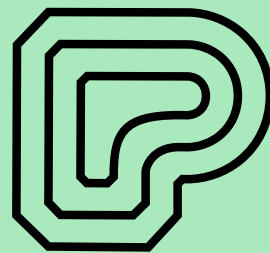




THE
PIANO
FACTORY



Kentish Town
3,242 sq ft - 15,469 sq ft



15,469 sq ft of offices to let, set within an industrial-chic style warehouse conversion, located within close proximity of Kentish Town West and Kentish Town stations.



STRIKING WAREHOUSE CONVERSION WITH ORIGINAL INDUSTRIAL FEATURES

Floor	Sq Ft	Sq M
4	1,820	169
3	3,262	303
2	3,283	305
1	3,242	301
GF	2,915	271
GF Reception	318	30
LGF	630	59
Total	15,469	1,438



SPECIFICATION



Air Conditioning



Terrace



Lift



Raised Floors



Showers



Ground Floor Meeting Rooms



Cycle Facilities



Refurbished



Exposed Beams & Brickwork



Architecturally Designed Staircase

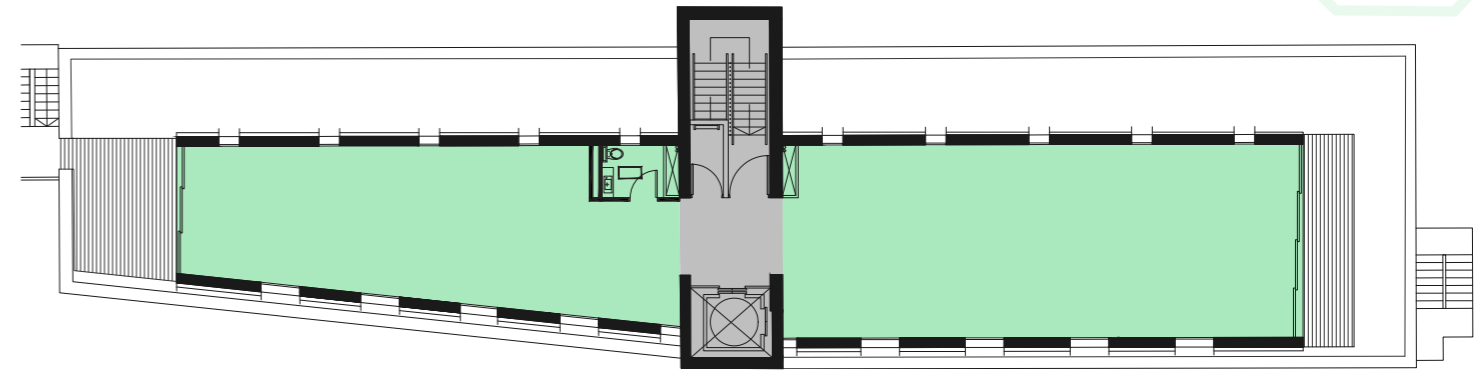
FORMER PIANO FACTORY BENEFITTING FROM VOLUME, LIGHT & CHARACTER

The Piano Factory offers refurbished warehouse accommodation on lower ground to 4th floors. It provides character office space in open plan together with a fully fitted ground floor meeting room suite, lower ground break out area and a kitchen and meeting room on the 4th floor.



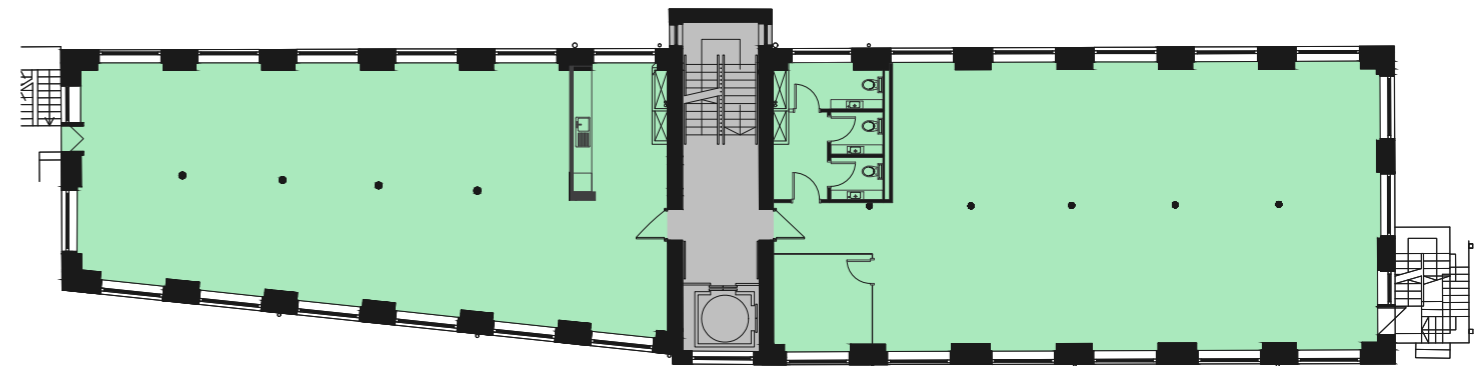
4TH FLOOR

1,820 sq ft | 169 sq m



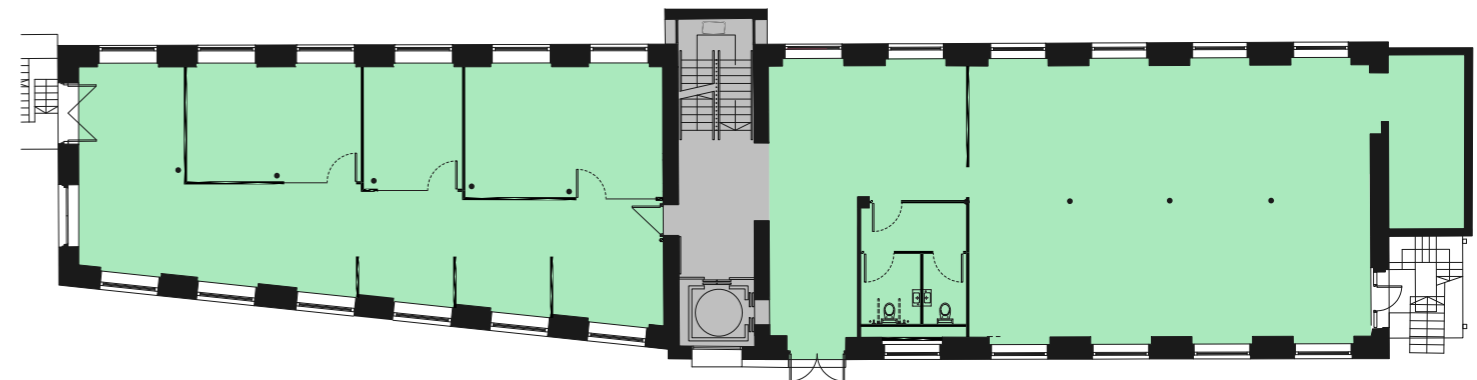
TYPICAL UPPER

3,283 sq ft | 305 sq m



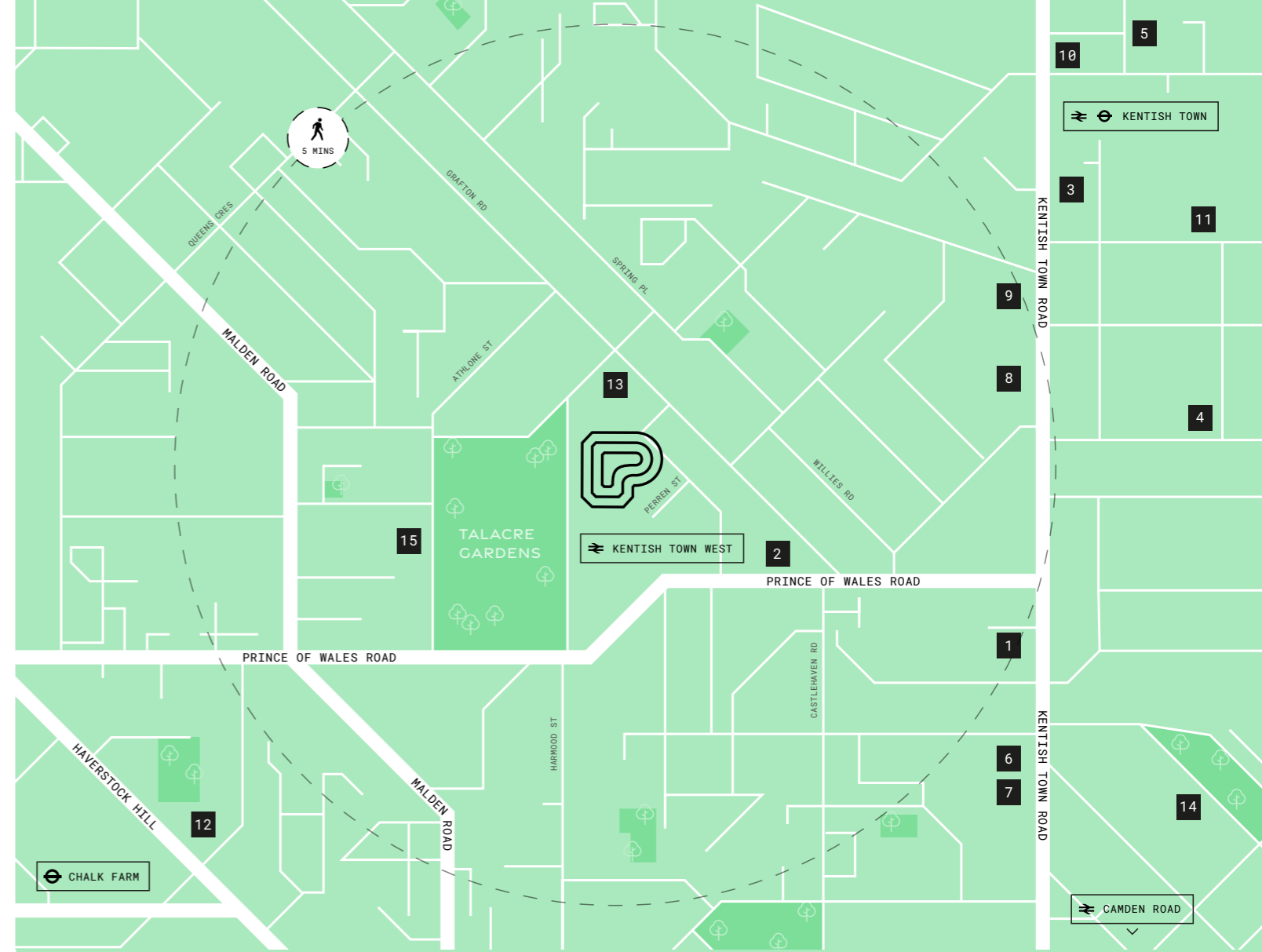
GROUND FLOOR

2,915 sq ft | 271 sq m





IN THE HEART OF KENTISH TOWN, ONE OF LONDON'S MOST VIBRANT AREAS.



1. The Rabbit Hole
2. Kentish Town Street Art
3. Boma Garden Centre
4. Camden Town Brewery
5. Kentish Town West Station



DRINK

1. Doppio Coffee
2. The Fields Beneath
3. Knowhere Special
4. The Lion and Unicorn
5. The Pineapple

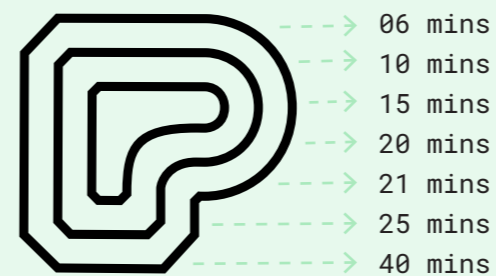
DINE

6. Albion's
7. Arancini Brothers
8. Bengal Lancer
9. E. Mono
10. The Rabbit Hole

UNWIND

11. Boma Garden Centre
12. In Motion
13. Lunar Cycles
14. Natural Health
15. St Pancras Boxing Club

TRAVEL TIMES



06 mins	Kings Cross
10 mins	Farringdon
15 mins	Tottenham Court Road
20 mins	Waterloo
21 mins	Old Street
25 mins	Dalston Junction
40 mins	Chiswick



THEPIANOFACORY.CO.UK



BRIAN ALLEN

07972 000 215

bmallen@savills.com

ANDREW WEDDERSPOON

07807 999 363

awedderspoon@savills.com



SIMON RINDER

07734 488 286

simonrinder@pilcher.london

JULIAN WOGMAN

07834 789 346

julianwogman@pilcher.london